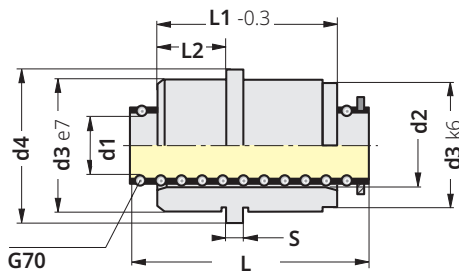




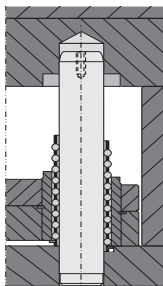
Steel Bush + Ball Cage Bush Set Code: **G29**



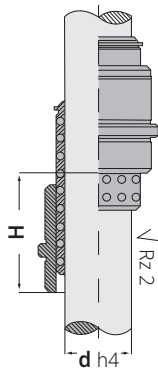
d1	L	L1	L2	d2	d3	d4	S	H
12	40	24	6	16	22	26	6	50
	56							82
18	45	34	11	24	30	35	6	44
	56							66
	71							96
30	56	54	21	38	46	52	6	32
	75							70
	95							110

It provides more precision and rapid motion at ejector plates in injection moulds.

Mounting Example



more precision and rapid motion



Order: **G29** d1 x L



Ball Material: 1.3505 (100Cr6)
Cage: Ms58 **Steel Bush:** 1.7131 (16MnCr5)

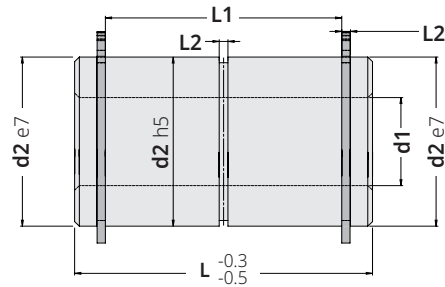
NEW



2 pcs. DIN 471

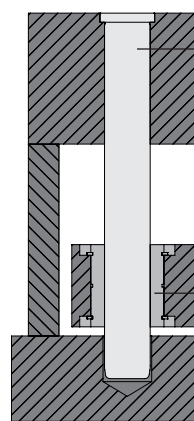


Linear Ball Bearing Bush with Circlips Code: **G175**



Order Code	d1	L	d2	L1	L2
G1751226	12	26	24	17	1.2
G1751834	18	34	30	25	1.5
G1751844	18	44	30	35	1.5
G1752034	20	34	32	25	1.5
G1752044	20	44	32	35	1.5
G1752544	25	44	40	30	1.75
G1752554	25	54	40	40	1.75
G1753054	30	54	48	40	1.75
G1753063	30	63	48	50	1.75

Mounting Example



G18

G175

Download
www.guvenal.net

3D CAD FILES
GÜVENAL